

2023 - 2024

LOCALITY PLAN

FOR THE **NORTH** COMMUNITIES

CARCROFT • SPROTROUGH • NORTON
ADWICK • ASKERN • BENTLEY • ROMAN RIDGE



Welcome to the 2023 Locality Plan for the North communities of Doncaster.

In 2022, Doncaster Council published its first ever locality plans. Working with partners, communities and businesses, a set of agreed priorities for each area across Doncaster were agreed, alongside a list of actions to support them.

The 2023, North Locality Plan looks back at what has been achieved throughout 2022 and sets out the plan for how this work will continue and grow over the next 12 months, as we work together to improve the lives of those communities that make up the North Locality.

At the core of the plan is the ongoing commitment by all Team Doncaster partners to hear the voices of local people, to understand the strengths in our neighbourhoods and build capacity in communities so that they can take control of their own destiny.

This plan is for the community and we encourage you to read it and get involved!



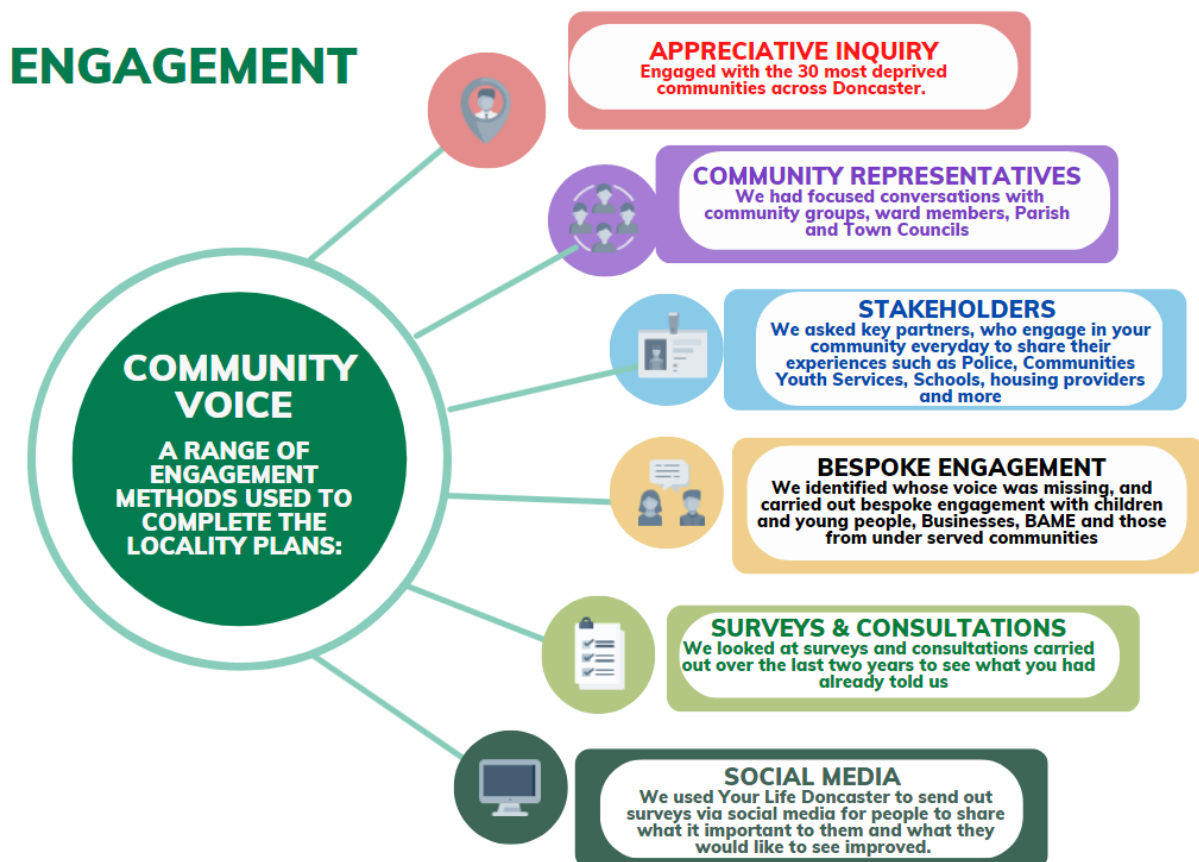
WHAT IS A LOCALITY PLAN?

Locality plans will look at how we can work together to strengthen communities and improve the lives and opportunities for the residents living there.

Doncaster is a place of places, where no two communities are the same. This means that deciding on what services, support or priorities are required at a City-wide level can risk leaving some communities behind. Planning these things at a locality level allows us to make sure that this will never happen.

A locality plan is something that needs to be truly owned by the communities it affects. This plan has been put together with more input and engagement from those living and working in the East area than ever before. Our communities have told us exactly what they want to see change and improve in the areas where they live and we have taken this insight and turned it into a workable plan we will deliver in conjunction with our communities and partners.

We engaged with communities through a number of different ways:



WHAT IS THE NORTH LOCALITY?

For the purpose of delivering the locality approach, Doncaster has been split into four localities, each consisting of a number of different communities.

The 'North' locality includes the following wards:

- Adwick and Carcroft
- Bentley
- Norton and Askern
- Roman Ridge
- Sprotborough

Although each of the above wards are grouped under the North locality, they will all also be considered and supported for the unique communities they are.

It is home to Campsall Country Park, Cusworth Hall, Barnsley Park, Adwick Park, Leisure Centre, Danum retail shops, Woodlands shops Boat Inn and Boating Lake. Additionally, it has several parish and town councils.



The following pages highlight what is good about our local communities and what you would like to see improve...



Adwick and Carcroft

Key facts about your community

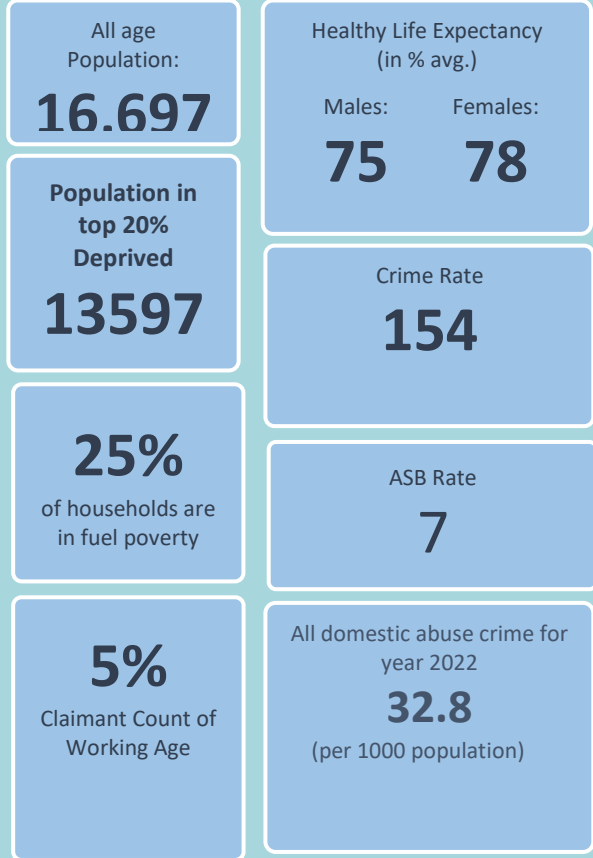
Adwick and Carcroft ward is made up of five villages. Adwick le Street, Carcroft, Woodlands, Highfields and part of Skellow. The ward has a population of 16,697.

Adwick-le-Street is situated North West of Doncaster, it has great transport connections with links to the A1 and Adwick train station. It also has access to green space with Adwick Park. It is home to Adwick Outwood academy and the Red House industrial park.

Carcroft is a village and civil parish. There is good access to amenities and a supermarket. Carcroft borders with Skellow; part of Skellow Village also lies in the Adwick & Carcroft Ward with the area known locally as five lane ends being part of the Norton & Askern Ward.

Woodlands is an ex-mining community, with many residents once working at nearby Brodsworth colliery. There is a good shopping area with a wide variety of retail outlets. Woodlands has great access to green space and countryside. Highfields is a small village, with its own primary school. It has access to countryside and is home to Highfields Lake and Country Park.

This ward has the following plans; Well Doncaster Plan Woodlands, Well Doncaster Plan Highfields.



Like

- Thriving Communities: Community Spirit & pride & Close to Family & Friends**

- Environment, Facilities & Green Space: Good Transport Links**

- Environment, Facilities & Green Space: Local Facilities & Amenities**

Improve

- Improving community safety and ASB**

- Environment, Facilities & Green Space: More for Young People to do**

- Environment, Facilities Green Space: Improve Public Transport**

"On the edge of countryside but close to good transport links and other cities"

"My daughter accesses the foodbank here, so I am thankful for this" service"

"I would like to see more police on foot patrols to help me feel safer"

"Kids have nothing to do in the area"

"More employment opportunities"

"Good community spirit before. I would like to see that again"

Key facts about your community

Bentley ward is made up of four villages: Bentley, Arksey, Toll Bar and part of Scawthorpe. The ward has a population of 18,367.

Bentley is a suburb of the north locality of Doncaster. It has its own railway station with links to places such as Leeds, Doncaster and Sheffield. Bentley has green space including Bentley Park, which was awarded the Green Flag award in 2021. It is also home to the Pavilion and has lots of shops and amenities.

Arksey is a village and has four satellite hamlets, Shaftholme, Tilts, Almholme and Stockbridge. Arksey has good access to the countryside and greenspace.

Shaftholme is a small hamlet in South Yorkshire in the parish of Arksey that is located half a mile north of Bentley and two miles north of Doncaster.

Toll Bar is a semi-rural hamlet and is situated on the A19 road, and approximately 3 miles north from the town of Doncaster, and adjacent to Bentley. This ward has the Well Doncaster Plan (Bentley and Toll Barr), and Bentley is part of the Major Urban Area (MUA).

All age Population:

18,367

Healthy Life Expectancy
(in % avg.)

Males: Females:

76 80

9,673

Population in top
20% Deprived

Crime Rate

178

(per 1000 population)

22%

of households are
in fuel poverty

ASB Rate

6

(per 1000 population)

5%

Claimant Count of
Working Age

All domestic abuse crime
for year 2022

39.7

(per 1000 population)

Like



Thriving Communities: Community Spirit & Pride & Social Capital



Environment, Facilities & Green Space: Good Transport Links



Environment, Facilities & Green Space: Good Events & Activities

Improve



Community safety and tackling anti-social behaviour



More Community Events & Activities & ones that support health & wellbeing



Environment, Facilities & Green Space: More affordable activities for young people

"Neighbours look after one another, make you feel safe."

"More buses and cleaner area"

"Build better stuff and repaint park and put camera and street lights on park, more parks, more shops, summer thing for kids like arts or swimming"

"Good variety of businesses"

"No police presence"

"Better youth clubs and free access to gyms"

Key facts about your community

Norton and Askern Ward is made up of multiple villages: Norton, Askern, Campsall, Burghwallis, Thorpe In Balne, Owston, Sutton, Fishlake & Fosterhouses, Sykehouse, Moss, Braithwaite & Kirk Bramwith, Fenwick, and parts of Skellow. The Ward has a population of 15,244.

The Norton & Askern Ward is historically part of the old West Riding of Yorkshire and has borders with both West and North Yorkshire. Having extensive areas of mixed farmland, giving the area a rural feel, the Ward covers a large geographical area, allowing great access to countryside and greenspace. The Ward retains a strong mining community, with it at one time being the home of Askern Main colliery, until its closure. Norton Parish comprises the villages of Norton, Campsall and Sutton, with boundaries formed by the River Went and the A1/Great North Road.

Askern is a town and civil parish. It is on the A19 road and lies between Doncaster and Selby. Askern is home to the Boating Lake, with adjacent sports and play facilities, a lakeside café and a regular Friday market. Askern became a famous spa town in the late 19th century, but lost its popularity with the opening of the coalmines.

Some parts of Skellow village lie within the Ward. The areas included are known locally as Five Lanes End and the Buttercross together with one side of Crossfield Lane and Lodge Road. The A1 runs immediately along the Western edge of the village, giving great motorway access. The Green Flag rated Campsall Country Park, Thornhurst Golf Course and Owston Hall, with its golf course and spa, are all located within the Ward. This ward has the Well Doncaster Plan (Askern).

All age Population:

15,244

Healthy Life Expectancy
(in % avg.)

Males: Females:

79 83

2

Population in top 20%
deprived

Crime Rate

110

(per 1000 population)

19%

of households are in
fuel poverty

ASB Rate

6

(per 1000 population)

5%

Claimant Count of
Working Age

All domestic abuse crime for
year 2022

23.5

(per 1000 population)

Like



Thriving Communities: Community Spirit & Pride



Environment, Facilities & Green Space: Community Venues, Events & Facilities

Crime & ASB: Feelings of Safety

Improve



Crime & ASB: Police Presence & tackling ASB



**Environment, Facilities & Green Space
Public Transport, Road Safety & parking**



More activities for young people

"The residents and parish Church"

"More police around maybe to make all children feel safe no matter where you are."

"Improved amenities, such as public transport"

"Campsall is lovely friendly family orientated,"

"The residents, local pub, the parish Church and Parish Council"

"Feel safe working here – compared to city centre"

"People seem a bit apathetic. You set things up and you don't get great take up but people still complain."

Key facts about your community

Roman Ridge ward is made up of multiple villages: Cusworth, Scawsby, Scawthorpe, and York Road. The ward has a population of 10,815

The Roman Ridge is that part of the Roman road of Ermine Street located in the Doncaster area of South Yorkshire. Although in places, Ermine Street follows the modern Great North Road, there is a stretch between Sunnyfields and Red House, which is known as the Roman Ridge.

Scawthorpe is situated close to the York Road area. It is a residential area with good transport links to the A1 motorway and is close to Bentley train station. The transpennine trail runs through some of the village giving great access to the trail and walking routes. Scawthorpe has its own small shopping area and good access to a variety of amenities

Scawsby is a suburb of Doncaster situated close to the A1 (M) motorway, and it has great amenities, with a supermarket and other local facilities. It has several popular schools and access to Barnsley Road Park and nearby Cusworth Hall and gardens.

Cusworth is a semi-rural village and suburb of Doncaster located 2 miles north-west of central Doncaster in the civil Parish of Sprotbrough and Cusworth. It is home to Cusworth Hall, an 18th century country house, and its surrounding parkland, attracting many visitors to the area. Some buildings in the old village can be dated back to the 16th century.

All age Population:

10,815

Healthy Life Expectancy
(in % avg.)

Males: Females:

80 87

0

Population in top
20% deprived

Crime Rate

79

(per 1000 population)

14%

of households are
in fuel poverty

ASB Rate

6

(per 1000 population)

2%

Claimant Count of
Working Age

All domestic abuse crime for
year 2022

21.2

(per 1000 population)

Like



Thriving Communities: Neighbours, Community and community spirit



Thriving Communities: Local support



Environment, Facilities & Green space: Local Amenities

Improve



Crime & ASB: More Police Presence



More Community Events & Activities



More activities for young people

"Our neighbours are very friendly and very helpful"

"Something for younger kids to do instead of wrapping swings up on local park, swearing & damaging park"

"More community attitude and interest and enthusiasm – community centres here but none use them"

"Good shops, eco-power, Doncaster being a city"

"It would be better if they cared more about the mental health department, especially for teenagers"

Key facts about your community

Sprotbrough ward is made up of multiple villages: Sprotbrough, Hooton Pagnell, Clayton, High Melton, Marr, Cadeby, Brodsworth & Pickburn, Hampole & Skelbrooke, Barnburgh, Harlington and Hickleton. The ward has a population of 10,824.

Sprotbrough is a large village to the west of Doncaster. Together with Cusworth to the north, it forms the civil parish of Sprotbrough and Cusworth.

Lower Sprotbrough is located east of the A1 (M) motorway, closer to Doncaster, while Sprotbrough Village lies to the west.

Sprotbrough Village harbours the grade one-listed St Mary's Church and The Old Rectory – the childhood home of Second World War flying ace, Douglas Bader.

The Ward has great access to green space and walks, with Sprotbrough Flash, the Lock and Sprotbrough Bridge all being popular places to visit. It is surrounded by countryside with many of its small villages having a rural feel.

The ward is also home to Brodsworth Hall and gardens one of the most complete surviving examples of a Victorian country house in England. It is virtually unchanged since the 1860s.

All age Population:

10,824

Healthy Life Expectancy
(in % avg.)

Males: Females:

83 83

0

Areas in this ward
in England's most
deprived 10%

Crime Rate

71

(per 1000 population)

12%

of households are
in fuel poverty

ASB Rate

5

(per 1000 population)

2%

of working age
population are
claiming Universal
Credit (Oct 21)

All domestic abuse crime for
year 2022

10.9

(per 1000 population)

Like



Health & Wellbeing: Supportive Services



Thriving Communities: Community & Community Spirit, Good Neighbours & Social Capital



Crime & ASB: Feelings of Safety

Improve



Crime & ASB: Improve Police presence, response and relationship with the police



Environment, Facilities & Green Space: Improve Public Transport



Health: Provide more activities for young and older people and improve local facilities

"Where I live is quiet and less crime is committed in it"

"Nice sense of community, neighbours are nice"

"How kind the wellbeing officer had been in trying to get hold of me again and come back – you are a credit to your company. Thank you."

"Good facilities and bus route"

"Friendly village & community"

"The Council needs to listen to local experts in the area."

"It would be easier if some buses ran a little more often"

What have we achieved in the last 12 months?

The **North Locality Plan** has now reached its first year milestone. Over the last 12 months local people, businesses, VCFS and partners have come together to co-design, co-produce and co-deliver against our local priorities in order to make a positive difference across our communities.



Environment, Sustainability & Green Spaces

- Effective use of household waste and recycling facilities to reducing fly tipping and littering
- Offered a Reuse and removal of bulky items service
- Provided bin stickers to aid understanding-reducing contamination
- Worked with Stronger Communities, organising litter picks in schools
- Active Travel & Carbon literacy Champions
- The “One Million Trees” programme and Doncaster Tree Register. Tree planting season is underway, and ties in with the ‘Queen’s Green Canopy’ campaign. 22 schools have participated
- Food Network & Allotments Service encouraging communities to feed their families lower cost, healthier meals
- Tree planting Woodland Trust’s Grow Back Greener Challenge Fund & planting across the North
- Heat Decarbonisation Plan (HDP) for Askern Leisure Centre
- Achieved Green Flag Park Status at Bentley Park, Campsall Country Park and Cusworth Hall Park.
- St Leger Homes has also committed £60k to tree planting, in line with the Mayor’s pledge.



Community Safety

- North area Police team aligned with the 4 locality areas, increasing presence
- Secured Safer Streets funding to tackle ASB and Violence against Women and Girls
- Delivered Operation Anticipate through the autumn and Winter Months and continued to roll our Stronger Families programme
- Run virtual reality workshops in North schools, to educate young people about ASB and its impact
- Worked with the Domestic Violence Theme Group regarding Domestic Violence across the locality and initiatives, strategies and responses to it.



Housing

- Income Management Officers work with struggling families to develop alternative payment arrangements to reduce rent arrears.
- They have carried out Days of Action across the North, including identification of messy gardens and tenancy breaches, signposting tenants to support. This should also improve neighbour relations and reduce the likelihood of disputes.



Amenities, Services and Support

- Increased numbers of GP appointments available, extending working hours and days. Offered health, including blood pressure checks in alternative settings to traditional health care ones to provide a more holistic approach to health and wellbeing
- Recruited Mental Health Support workers in our GP practices and delivered Mental Health Inequality awareness training for all practices
- Offered mental health first aid training for employees of organisations in our locality
- Referred families presenting with mental health support needs to other services via our triage function
- Launched a SPA for personalised care – providing a more holistic and streamlined process for patients presenting to primary care for personalised care
- Launched Personalised Care Pilot – for high intensity users to engage them with proactive social prescribing or other personalised care
- Launched a Pain Support Service Pilot
- Launched Primary Care Mental Health Hubs
- Developed strategies for Early Cancer Diagnosis, Health inequalities and Learning Disabilities/Mental Health



Children and Young People

- Delivered the Holidays and Food Programme to give Children and Young People positive activities to engage in, and tackle poverty, ensuring children, particularly the most disadvantaged have a meal
- Supported the reopening of Shakers at Askern
- Recruited a dedicated youth worker for the North



Poverty

- Delivered the Winter Warmth Programme in the North, supplying:
 - Advice packs, draft excluders, slow cookers, warm clothing, blankets, electric blankets, hot water bottles
- Provided Safe warm spaces in our Triage function.
- Developed and rolled out of the Cost of Living Toolkit
- Provided & promoted Foodbanks and hygiene banks across the North and support to buy white goods
- Supported residents in our North triage setting into work and/or upskill to a higher-paid job/career
- We share information on Facebook around services provided in our North Hub
- Provided Information, Advice & Guidance on income and benefits through the Citizens Advice Bureau and other agencies



Find full details on the progress made as part of the Locality Plan for the North communities, by visiting:

www.yourlifedoncaster.co.uk/north

2023 PRIORITIES FOR NORTH LOCALITY

At the beginning of this plan, we stated we would define the priorities for improving the area over the next year. We have outlined how we have analysed the information and have identified the following priorities for the North Locality:



Environment, Sustainability & Green Space



Health & Wellbeing



Business & Regeneration



Thriving Communities

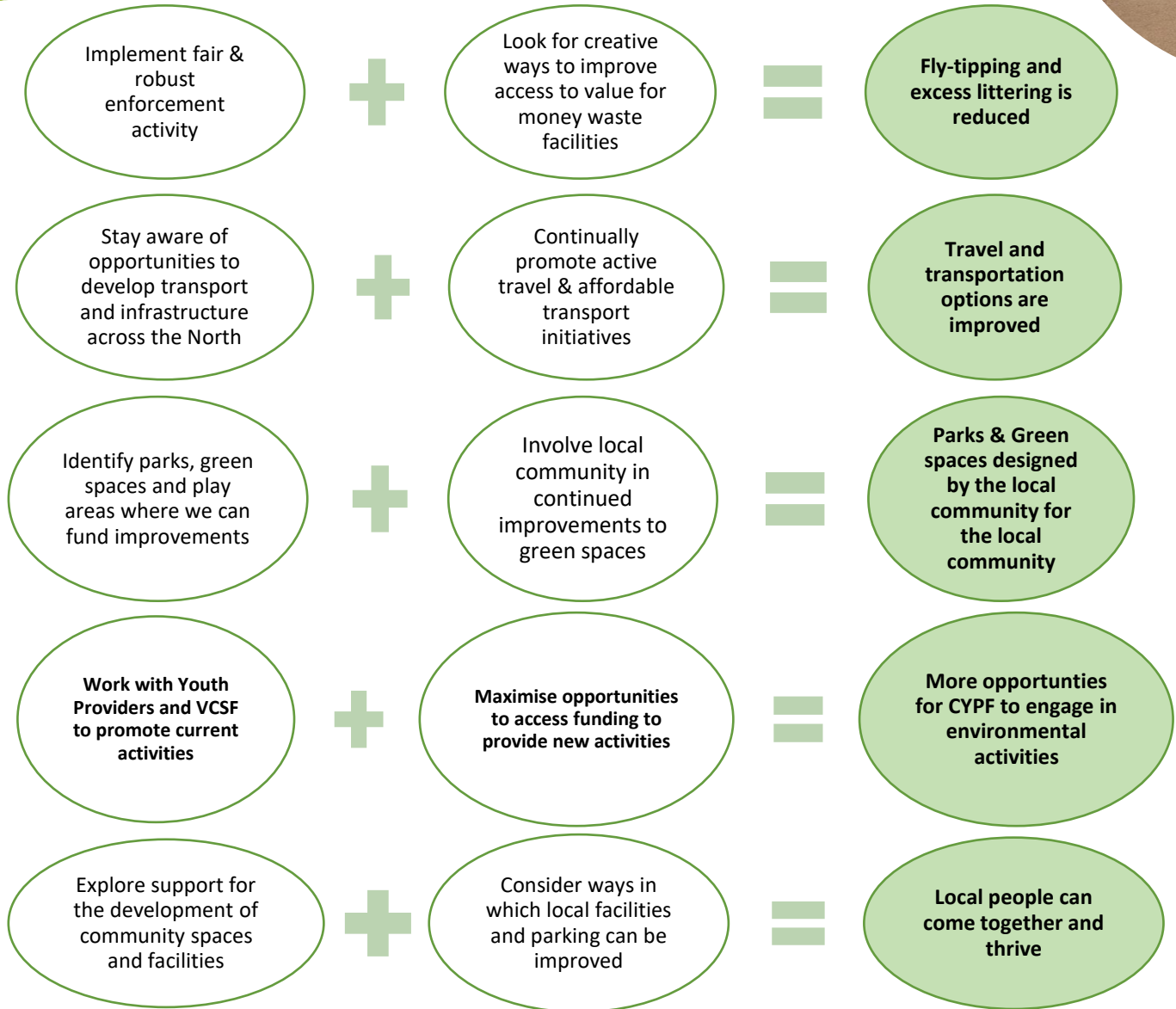


Community Safety

*The plans and strategies detailed in the coming pages are examples of how we are currently working to support these priority areas and are not meant to represent a complete list. Extracts need to be considered in the context of the whole plan or strategy document.



Through effective **coordination, continuous engagement, collaboration** and **communication** we will **work together to build on the local strengths and assets** across the North Locality:



SUPPORTED BY

SYMCA Strategic Economic Plan

- We will build a transport system that works for everyone, connecting people to the places they want to go within the region as well as nationally and internationally. Our transport system will be safe, reliable, clean, green and affordable

Get Doncaster Moving Strategy

- Everyone in Doncaster can enjoy being active in local places and spaces. The natural and built environment will be safe, accessible and inclusive for **local people**. We must provide the right environment if we want people to be active

Local Plan:

- Ensure that new development and infrastructure requirements such as, roads, broadband, open space, health facilities and schools are improved and/or delivered together; enhance the vitality of our existing town centres and the wider Borough making a more attractive, healthier, safer and more active place to live, visit and work

Doncaster Community Safety Strategy

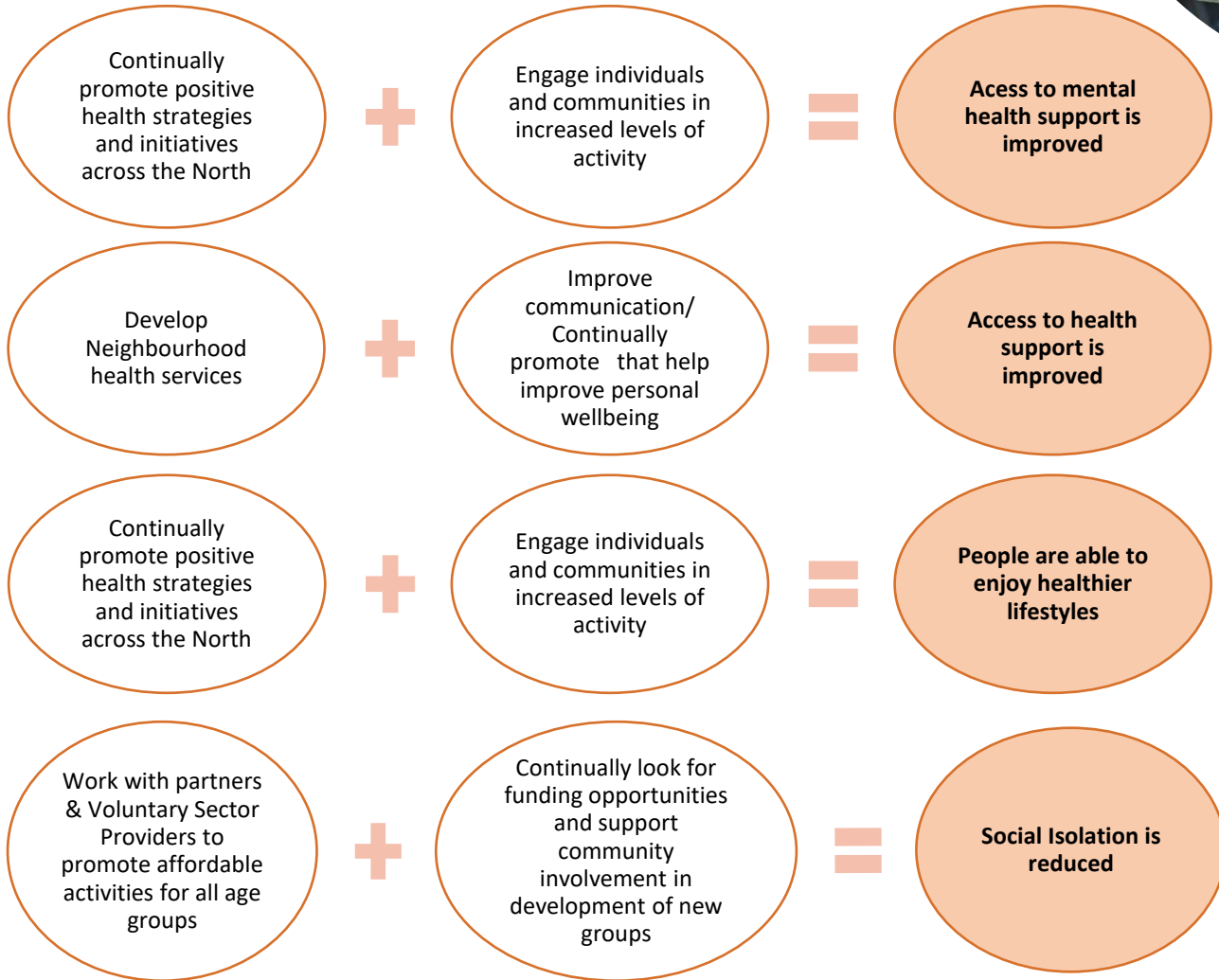
- Implement effective problem-solving approaches to reduce the impact of fly tipping and criminal damage within communities, particularly damage linked to anti-social behaviour e.g. graffiti

Doncaster Borough Strategy

- Reduce fly-tipping and graffiti and regularly clean the streets and roads
- Explore ways of improving travel around the borough through the integrated transport and improved access to work initiative.
- Strive to make Doncaster accessible by all means of transport and promote the use of cycling and walking activities as an alternative to using traditional means of transport
- Continue the success of our events programme with a programme of events for the next year. We will support businesses and enterprise to maximise on the events programme.
- Explore ways of improving travel around the borough through the integrated transport and improved access to work initiative



Through effective **coordination, continuous engagement, collaboration and communication** we will **work together to build on the local strengths and assets** across the North locality:



SUPPORTED BY

North PCN Strategy:

- A clear understanding of the strengths, needs and health inequalities of the population served by the PCN
- Resilient, high quality general practice services which are easy to access for all patients
- Effective collaborative working with our local communities and health and care system partners
- Better prevention, diagnosis and care for cancer, heart disease and stroke especially for people with a higher risk of illness and death
- A diverse and well-trained Professional Support Team providing an additional primary care workforce to support general practice, provide personalised care and improve wellbeing
- An effective, diverse and inclusive leadership which supports workforce development

Doncaster Borough Strategy

- Work towards a healthy and compassionate borough where collectively everyone is supported to add life to years and years to life where everyone has access to essential health services

Health and Wellbeing Strategy

- Improve the mental health and wellbeing of the people of Doncaster ensuring a focus on preventative services and the promotion of well-being for people of all ages
- **For** all Doncaster people to be able to make informed choices to enjoy a good quality and healthy life

Get Doncaster Moving Strategy:

- **Everyone in Doncaster can enjoy being active in local places and spaces.** The natural and built environment will be safe, accessible and inclusive for **local people**. We must provide the right environment if we want people to be active

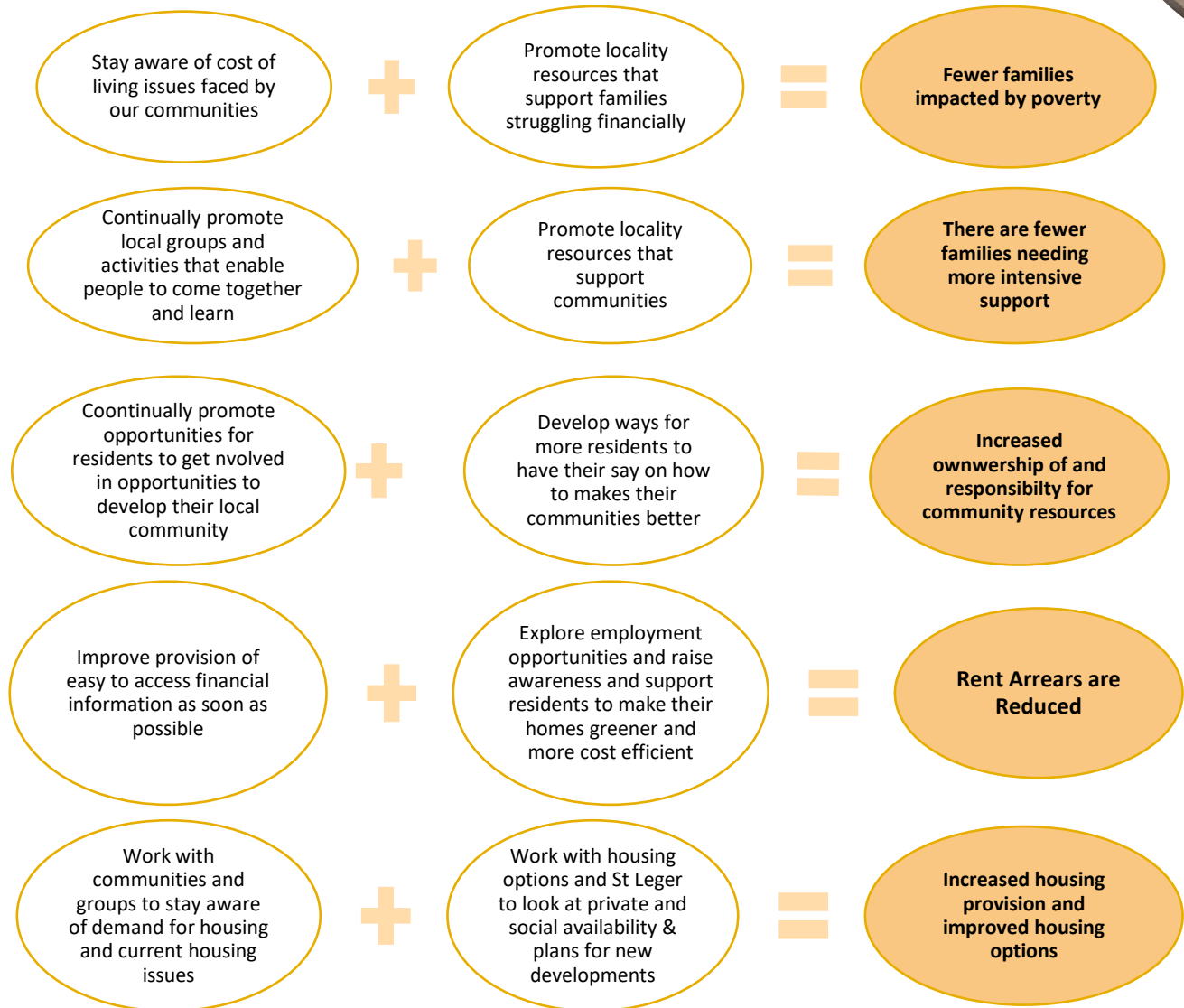
Doncaster Place Plan

- Develop communities to enable people to access support, information, advice and guidance through local solutions

You asked us to... Strengthen and Empower Communities and Enable Them to Thrive



Through effective **coordination, continuous engagement, collaboration and communication** we will **work together to build on the local strengths and assets** across the North locality:



SUPPORTED BY

Doncaster Borough Strategy:

- Thriving People, Places and Planet
- Prosperous & Connected
- Safe & Resilient
- Skilled & Creative

SYMCA Strategic Economic Plan:

- Build a fairer, more inclusive economy, linked more closely to wellbeing and to our communities – helping people gain a greater stake in their work and removing barriers so everyone has the chance to prosper

Get Doncaster Moving:

- Ensure Active Design is at the forefront of planning proposals so that natural and built assets meet the needs of local communities, wildlife and the environment whilst supporting movement, physical activity and sport
- Increase the land devoted to greenspace and nature (including developing a 'Great Yorkshire Fen') to support physical activity

Doncaster Housing Strategy:

- Meet housing need & aspirations, support our local economy and help revitalise town centres and communities.
- Make homes greener and more energy efficient to keep energy costs affordable

Doncaster Place Plan:

Supporting communities to thrive, working much more closely with the voluntary, community and faith sector, investing in social prescribing to improve health and emotional wellbeing

Developing a **'front door system'**, where there is no wrong door to access health and care services. This will help get people to the right place, first time

Joining up care and support at home. We know many people can recover quickly and easily if they are supported at home

All of this will help ensure our **specialist services can be used more appropriately**, across all three life stages – reducing the demand and need for hospital and emergency care.

You asked us to... Make improvements for Businesses and Maximise Opportunities for Regeneration



Through effective **coordination, continuous engagement, collaboration** and **communication** we will **work together to build on the local strengths and assets** across the North locality:

Work with partners and Business Doncaster to stay aware of businesses looking to locate in Doncaster



Continually look for opportunities for infrastructure & Regeneration Funding available to develop the North to increase attractiveness



Opportunities for investment in the North are Maximised

Work with organisations like AdvanceEmployment Hubs to look at support they can offer communities and businesses



Work with Triage and other local services to encourage participation through offering support locally



Communities have the skills that potential new investors want & need

Work with partners and Business Doncaster to stay aware of businesses needs



Work with established businesses through Business Doncaster and Community Groups to increase likelihood of existing/established businesses remaining



Existing Businesses have the support they need to stay

SUPPORTED BY

SYMCA Strategic Economic Plan:

- People - Helping people find jobs and adapt to the new economy with regard to:
 - Unemployment
 - Pay
 - Recruitment
 - Education
 - Workforce Pipeline

Employers:

Support for employers to adapt, survive and thrive and deliver a jobs-led recovery

Team Doncaster Education & Skills Strategy 2030:

- Priority 1: Best Start
- Priority 2: Accelerating Achievement
- Priority 3: A New Model of Post-16 Education
- Priority 4: New Skills and Pathways to Fulfilling Life and Work
- Priority 5: Equitable and Inclusive Lifelong Learning

Doncaster Economic Strategy 2030: By 2030: We aspire to have:

- An economy that improves living standards for all and leaves no people behind
- A more resilient, productive economy across all places
- A greener regenerative economy that restores and enhances our planet

Doncaster Core Strategy

- Distribute growth and regeneration where it would do most good in terms of supporting prosperous and sustainable communities by improving the economic performance of towns, promoting regeneration and tackling deprivation

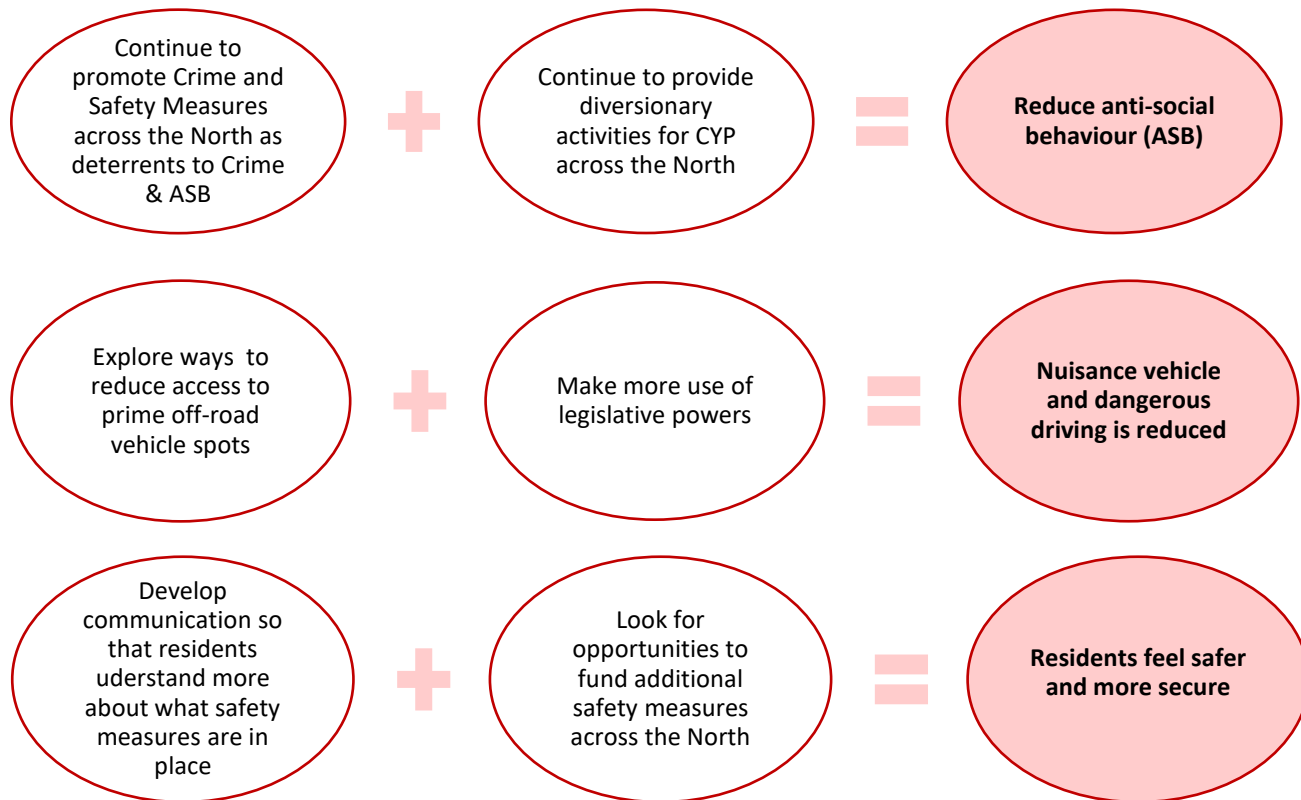
Doncaster Borough Strategy

- Work towards a Doncaster where everyone can secure the income they need to have a decent minimum living standard and access debt advice and support if needed

You asked us to... Improve Community Safety



Through effective **coordination, continuous engagement, collaboration and communication** we will **work together to build on the local strengths and assets** across the North locality:



SUPPORTED BY

Children and Young People's Plan: LOCYP engagement and partnership

- Work with the Safer Stronger Doncaster partners to reduce ASB in and around Doncaster.

Doncaster Community Safety Strategy

- Effectively manage anti-social behaviour (ASB) through proactive responsive approaches supported by improved mechanisms to report and respond to incidents
- Improve community confidence in reporting ASB by providing reassurance that we will listen, understand and build relationships with victims and communities

Anti- Social Behaviour Delivery Plan

- Effectively manage anti-social behaviour through proactive and responsive approaches to respond to incidents.
- Tackle the issue of illegal off-road bikes and quads through a partnership approach, utilising all available tools and powers
- Communicate the successful use of existing CCTV through newsletters to demonstrate the benefits and value of our CCTV deployments.

Get Doncaster Moving – Waking Strategy

- Work with South Yorkshire Safer Roads Partnership to ensure Road Safety Training is offered to all primary schools in the Borough.

Violence Reduction Action Plan

- Develop an effective multi-agency response to tackling violence against women and girls
- Ensure victims of violent crime receive the appropriate and timely support
- Promote the public health approach to reducing violent crime

Doncaster Borough Strategy – 'Doncaster Delivering

- Tackle crime and ASB and the root causes
- Tackle domestic abuse and its root causes



Your Life Doncaster

Discover the Your Life Doncaster website
you can find helpful information about
your community, including:

Help

Information and support for adults, young people and children to live happy and healthy lives

Community

What is available in your area from community groups and Family Hubs, to your local Police and community contacts

News

New stories, events and updates about your local community



Find out more by visiting
www.yourlifedoncaster.co.uk